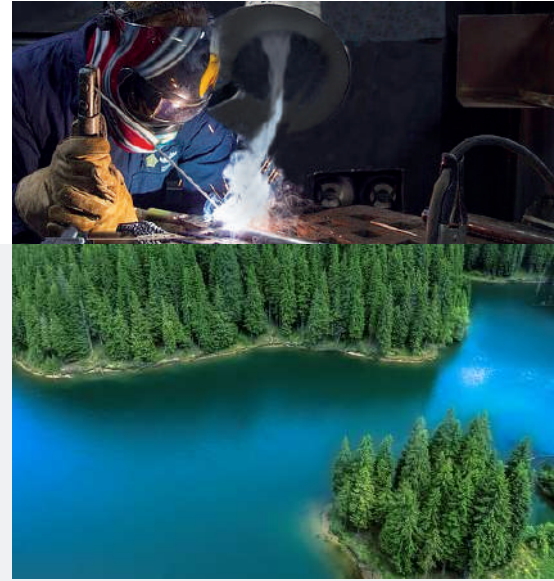


Evolution No Smoke

& Evolution No Smoke ATEX

Welding fume and dust
extraction arms



Evolution No Smoke

Evolution No Smoke **wall-mounted**
Evolution No Smoke **cart-mounted**

Evolution No Smoke ATEX

Evolution No Smoke **ATEX wall-mounted**
Evolution No Smoke **ATEX cart-mounted**



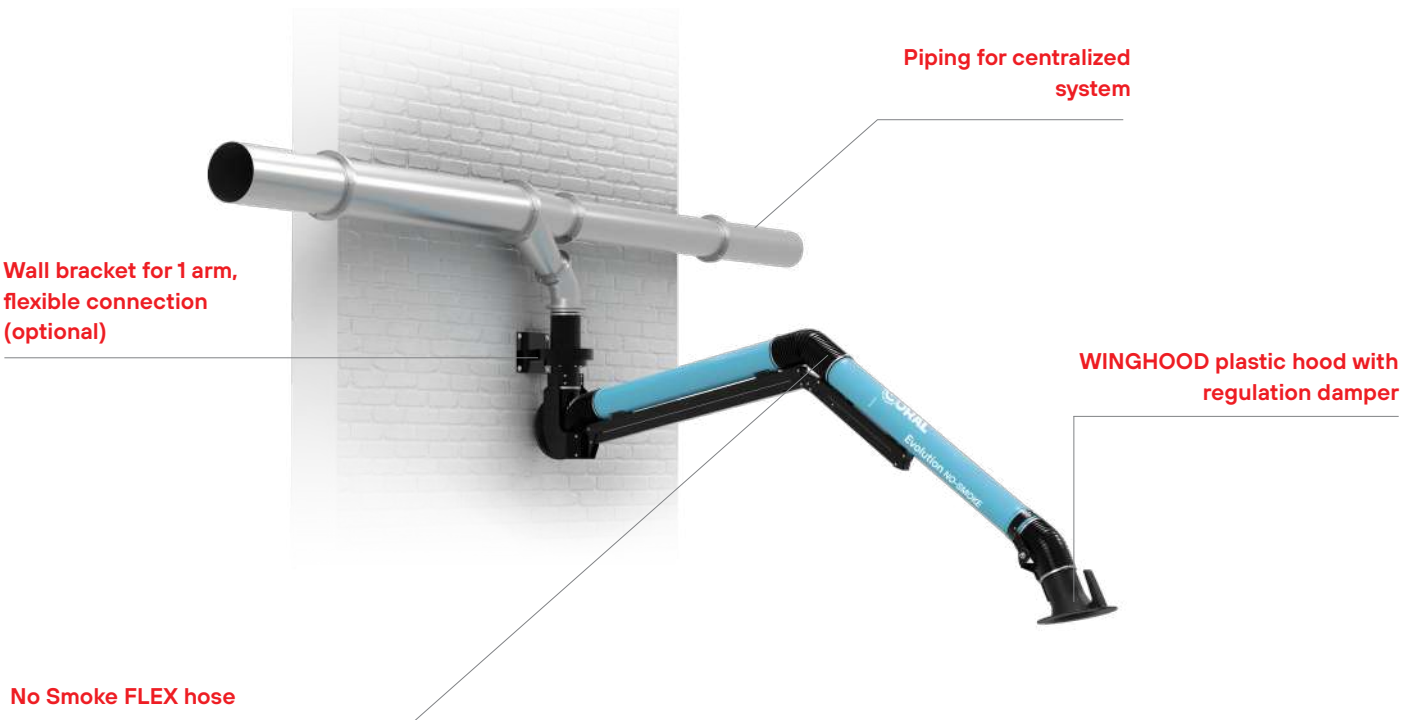
Innovative Air Solutions
For a cleaner future.

Design

The Evolution No Smoke line offers extraction arms with a variety of features, adaptable to any type of work environment. Thanks to their smooth, one-handed movement, the arms allow the suction hood to be positioned exactly where is needed - and stay firmly in place - while removing contaminated air and protecting operator health. The Evolution No Smoke extraction arm is the ideal technical solution for capturing welding fumes, gases, vapors, aerosols, oil mists, dust, and more. Evolution No Smoke arms are available in multiple sizes and can be wall-mounted, cart-mounted or integrated into centralized systems.

Evolution No Smoke

17 Models



Highlights

- **New Winghood** hood designed to increase capture efficiency by up to 30%.
- **Patented external articulation** that keeps airflow unobstructed while allowing easy adjustment and full 360° movement of the arm.
- **Built-in regulation damper** to control required airflow and reduce energy consumption.
- **Pipes** made of heavy-gauge coated steel.
- **Eco-frienly solution** for energy saving and low noise, especially when combined with a fan inverter.
- **Reduced pressure loss**, thanks to the patented external joint system, maintaining high airflow efficiency under load.
- Can be **mounted with** extensions, cable ducts, or wall and ceiling brackets.

Applications

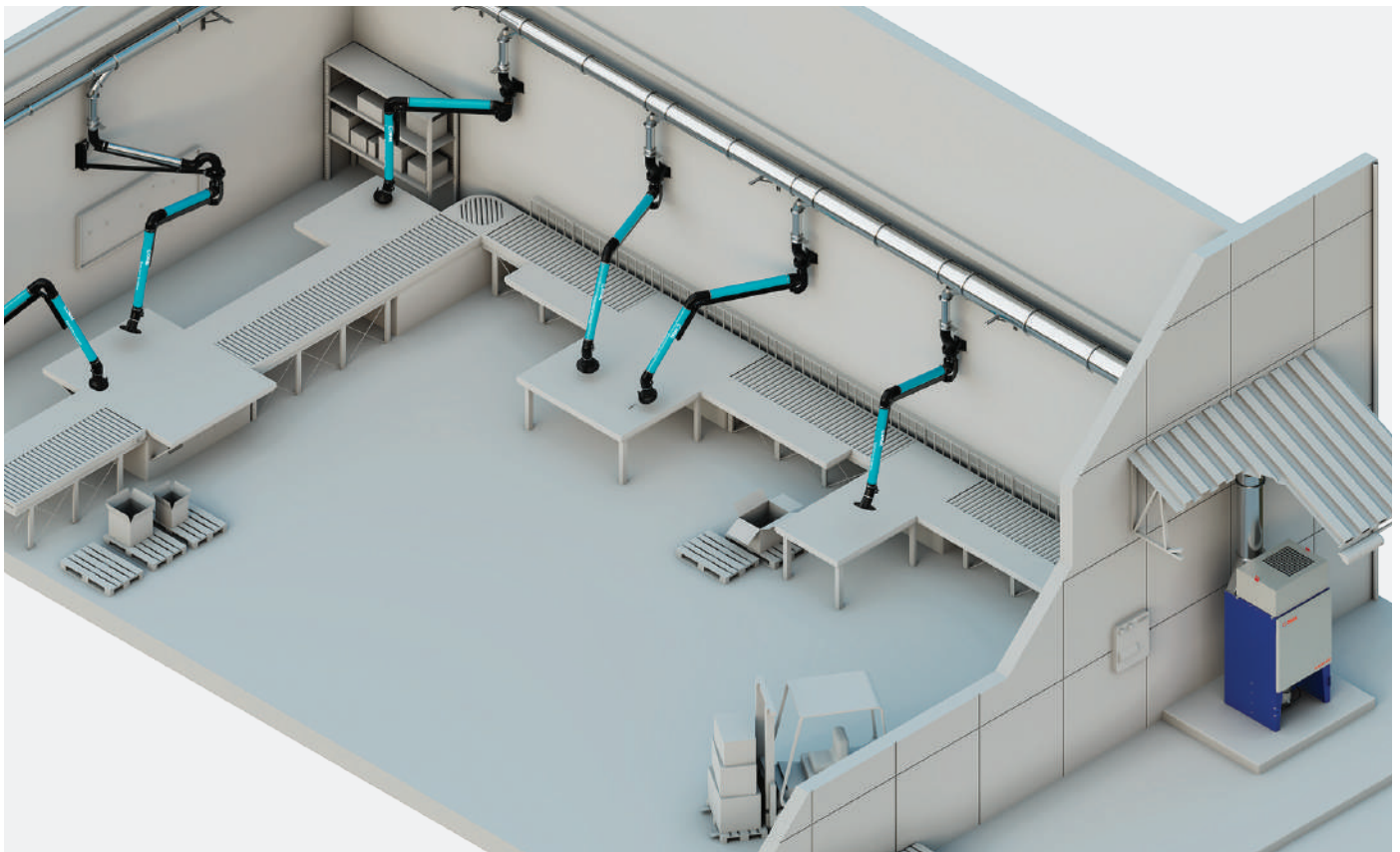


Welding | Grinding | Deburring | Polishing | Sanding | Thermal Cutting | Dry dust | Hazardous dust | Sandblasting | Powder coating

Unmatched mobility for heavy-duty use

The Coral Evolution No Smoke extraction arm is ideal for heavy-duty applications and centralized systems, combining durable construction with unmatched mobility. Its patented external articulated joints, fully balanced design, and hand-assembled

metallic swivel allow effortless positioning and full 360° rotation. Unobstructed airflow reduces pressure losses, fan load, and noise, ensuring years of reliable, energy-efficient operation.



Operating principle

The contaminated air is drawn in through the articulated hood, passes through heavy-duty, scratch-resistant painted steel piping (with aluminum or stainless steel as optional), then reaches the high-efficiency fan or the centralized ductwork, and from there to the filtration unit suited for the application.

The Evolution's piping and hood are linked by patented external articulated joints and durable flexible hose, ensuring smooth and easy arm movement. The system also features a slewing ring that allows full 360° rotation when mounted on the prepared support. Since airflow is never blocked by internal joints, and thanks to the short hose length at the elbows, pressure drop is much lower than in comparable systems. Lower pressure drop means reduced fan power demand - and therefore energy savings - together with lower air velocity and, as a result, reduced noise levels.



 POLLUTED AIR

- ① Arm slewing ring for Evolution No Smoke
- ② Flexible hose No smoke flex
- ③ Articulated support
- ④ Rigid pipe
- ⑤ Winghood plastic hood with adjustment damper
- ⑥ Junction

Product range



Evolution No Smoke

Wall-mounted version
Optional wall bracket

Diameter (inches)	Length (feet)	A.	I.	P.
Ø4	9		■	■
Ø6.3	7 10 14		■	■
Ø8	7 10 14	■		
Ø10	10 14	■		

■ A. Aluminium ■ I. stainless steel ■ P. Pre-coated



Evolution No Smoke

Cart-mounted version

Diameter (inches)	Length (feet)	A.	I.	P.
Ø4	9		■	■
Ø6.3	7 10 14		■	■
Ø8	7 10 14	■		
Ø10	14	■		

■ A. Aluminium ■ I. stainless steel ■ P. Pre-coated

Types of installation



Version with fan

Diameter (inches)	Length (feet)	HP
Ø6.3	7 9 10	1.5
Ø8	7 9 10	2.0



Version with column support
(for 1 or 2 arms)

Column height (ft)
11.5
11.5
11.5
11.5



Version with ceiling support

Diameter (inches)	Length (feet)
Ø4	9
Ø6.3	7 10 14
Ø8	7 10 14
Ø10	10 14



Sliding channel version (blindair)

Diameter (inches)	Length (feet)
Ø4	9
Ø6.3	7 10 14



Version with cartridge filter

Diameter (inches)	Length (feet)
Ø4	9
Ø6.3	7 10 14

Bandiera

Patented BANDIERA Evolution No Smoke extension boom. Includes rigid piping and a wall-mount bracket, and when combined with the arm, can reach lengths up to 24.6 feet.

The 3.3 ft extensions use flexible hose instead of rigid tubing, unlike the longer sizes.

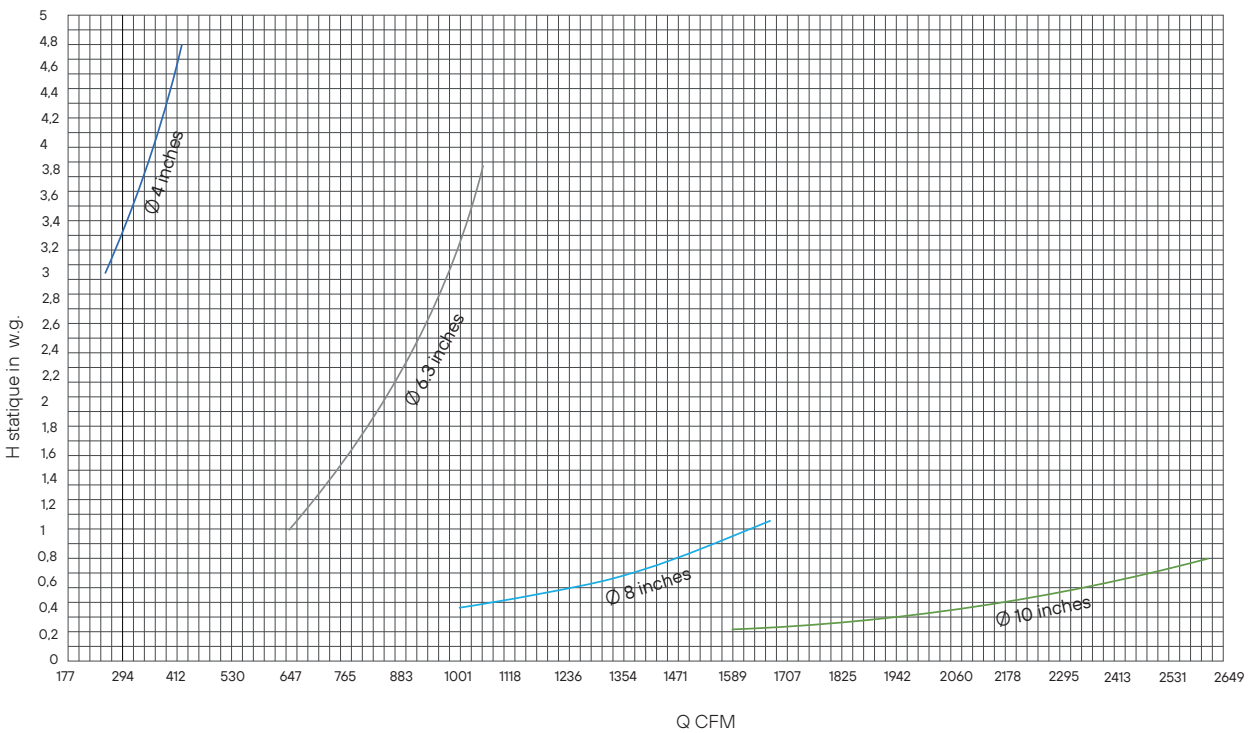


Diameter (inches)	Length (feet)
Ø6.3	10 14
Ø8	10 14
Ø10	10 14

Technical features

Technical features		Model Evolution No Smoke						
		Ø4" 9'	Ø6.3" 10'	Ø6.3" 14'	Ø8" 10'	Ø8" 14'	Ø10" 10'	Ø10" 14'
Maximum flow rate (air speed 25 m/s)	CFM	418	1060	1060	1678	1678	2602	2602
Maximum static loss	in w.g.	5	4	4	1	1	1	1
Recommended nominal flow rate (air speed 21 m/s)	CFM	353	883	883	1413	1413	2178	2178
Nominal static loss	in w.g.	4	3	3	1	1	0.5	0.5
Weight	lb	44	73	80	102	111	133	144

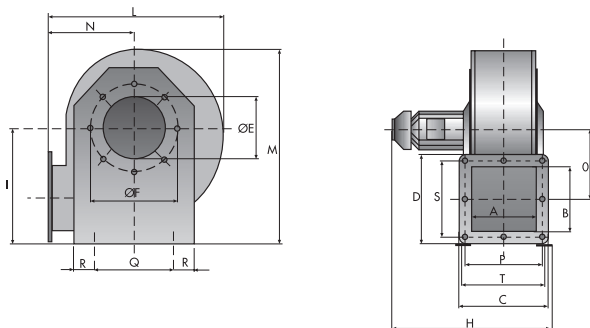
Pressure losses referred to the extended Evolution No Smoke arm



Air flow rate (CFM) referred to Evolution No Smoke arm with NO SMOKE fan

	No Smoke Fans						
	Ø4" 9'	Ø6.3" 7'	Ø6.3" 10'	Ø6.3" 14'	Ø8" 7'	Ø8" 10'	Ø8" 14'
HP 1	400						
HP 1.5		1060	1060	1036			
HP 2					1472	1472	1442

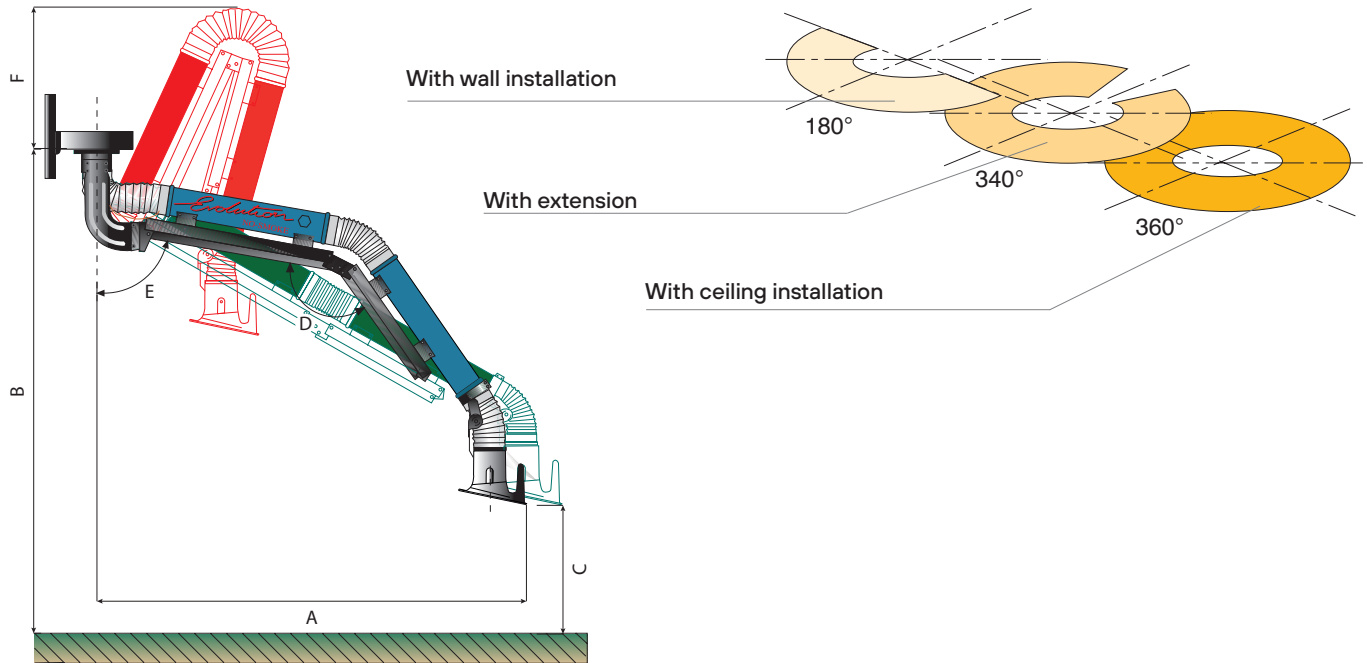
Overall dimensions



No Smoke Fans	DIMENSIONS (inches)																	
	A	B	C	D	Ø E	Ø F	H	I	L	M	N	O	P	Q	R	S	T	dB(A)
HP 1 / Ø4	6.3	6.3	8.7	8.7	4.1	5.9	17.0	11.3	16.9	18.8	8.4	6.4	7.5	7.8	2.1	7.5	8.0	80
HP 1.5 / Ø6.3	6.3	6.3	8.7	8.7	6.0	8.5	17.0	11.3	16.9	18.8	8.4	6.4	7.5	7.8	2.1	7.5	8.0	81
HP 2 / Ø6.3	7.0	7.0	9.5	9.5	6.1	8.5	19.8	14.9	21.1	24.4	10.2	9.0	8.3	11.0	1.9	8.3	8.8	82
HP 2 / Ø8	8.0	8.0	10.3	10.3	8.1	10.6	20.6	16.3	23.7	27.0	11.3	10.2	9.1	12.6	1.8	9.1	9.6	82

Overall dimensions

Wall-mounted version



■ Working position
 ■ Extended arm
 ■ Folded arm

Depends on the application

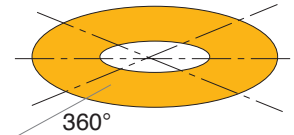
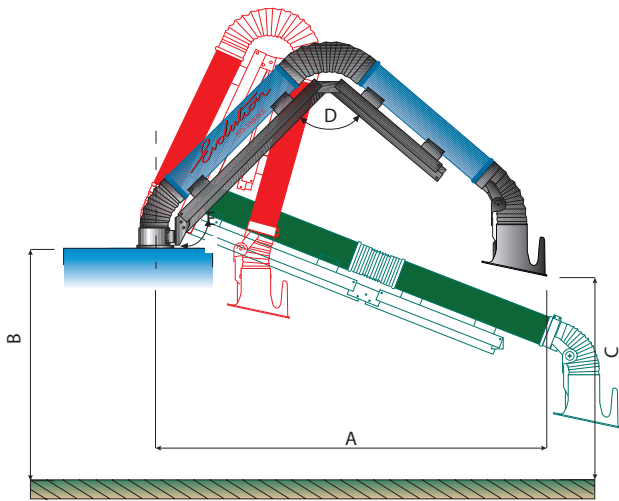
Working position	DIMENSIONS (inches)						
	Ø4" 9'	Ø6.3" 10'	Ø6.3" 14'	Ø8" 10'	Ø8" 14'	Ø10" 10'	Ø10" 14'
A	86.6	96.4	130.0	93.1	125.9	96.1	131.9
B	118.1	118.1	118.1	118.1	118.1	118.1	118.1
C	59.0	55.1	78.7	47.2	55.1	51.1	59.1
D	110°	145°	110°	140°	115°	130°	110°
E	100°	80°	120°	80°	105°	110°	100°

Extended arm	DIMENSIONS (inches)						
	Ø4" 9'	Ø6.3" 10'	Ø6.3" 14'	Ø8" 10'	Ø8" 14'	Ø10" 10'	Ø10" 14'
A	86.6	110.2	141.7	102.3	146.8	102.4	147.7
B	118.1	118.1	118.1	118.1	118.1	118.1	118.1
C	47.2	90.5	59.0	86.6	87.8	87.0	89.0
D	145°	180°	150°	180°	180°	180°	180°
E	78°	90°	90°	90°	90°	90°	90°

Folded arm	DIMENSIONS (inches)						
	Ø4" 9'	Ø6.3" 10'	Ø6.3" 14'	Ø8" 10'	Ø8" 14'	Ø10" 10'	Ø10" 14'
A	23.6	35.4	39.3	31.5	39.3	31.5	39.3
B	118.1	118.1	118.1	118.1	118.1	118.1	118.1
C	82.7	82.7	82.7	77.5	78.7	74.8	76.7
D	10°	10°	10°	10°	10°	15°	15°
E	155°	150°	150°	150°	155°	165°	165°
F	31.5	33.5	55.1	35.4	57.1	37.4	59.0

Overall dimensions

Cart-mounted version



With cart-mounted installation

The coverage area depends on the machine it is mounted on

■ Working position ■ Extended arm ■ Folded arm

Working position	DIMENSIONS (inches)				
	Ø4" 9'	Ø6.3" 10'	Ø6.3" 14'	Ø8" 10'	Ø10" 10'
A	70.9	88.6	126	88.6	90.6
B	*	*	*	*	*
C	*	*	*	*	*
D	90°	90°	90°	90°	90°
E	135°	135°	135°	135°	135°

Extended arm	DIMENSIONS (inches)				
	Ø4" 9'	Ø6.3" 10'	Ø6.3" 14'	Ø8" 10'	Ø10" 10'
A	90.6	102.4	145.7	102.4	104.4
B	*	*	*	*	*
C	*	*	*	*	*
D	180°	180°	180°	180°	180°
E	90°	90°	90°	90°	90°

Folded arm	DIMENSIONS (inches)				
	Ø4" 9'	Ø6.3" 10'	Ø6.3" 14'	Ø8" 10'	Ø10" 10'
A	14.6	25.2	23.7	28.0	30.0
B	*	*	*	*	*
C	*	*	*	*	*
D	0°	0°	0°	0°	0°
E	180°	180°	180°	180°	180°

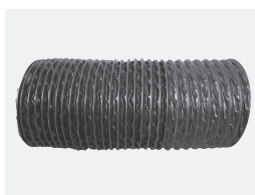
General Components



Plastic hood WINGHOOD with adjusting damper for Ø6.3 in



Aluminium hood for Ø4/8/10 in



No Smoke Flex Hose

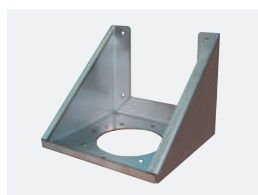


Slewing ring for EVOLUTION NO SMOKE arm

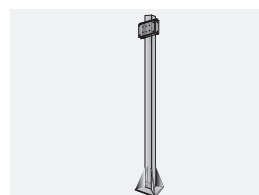
Optional



Wall bracket



Stainless steel wall bracket



Column support for 1 NO SMOKE fan



NO SMOKE series fan without rotating bearing



Wall bracket for fan



Control panel for arm fan



Painted metal hood for Ø6.3 in on request



Stainless steel cap for Ø4/6.3/8/10 in



WINGHOOD plastic hood, complete with integrated light and spark-arrestor



Aluminum hood, complete with integrated light and spark-arrestor mesh



RAC Smooth fittings for NO SMOKE fans



Air outlet pipe set for EVOLUTION NO SMOKE fan and arm



MOBIL TOWER self-supporting, non-extracting arm



TRIAXE joint for Ø6.3 in arm hood NO SMOKE

Gallery



THE TOUGHEST ON THE MARKET

coralusa.com

Evolution No Smoke ATEX

CE II 3DST1 Independently tested
in accordance with regulation 2014/34/EU
Suitable for organic, inorganic, and metallic powders.



Evolution No Smoke ATEX

Evolution No Smoke **ATEX** wall-mounted
Evolution No Smoke **ATEX** cart-mounted



Innovative Air Solutions
For a cleaner future.

Application



Grinding | Polishing | Sanding | Dry Dust | Hazardous Dust | Sandblasting | Powder coating

Bandiera ATEX

Patented BANDIERA ATEX extension for the Evolution No Smoke ATEX. Supplied with an antistatic hose (R<10⁹ Ohm, -4°F < T < 194°F), rigid AISI 316 stainless steel ducting, and a wall-mounting bracket. The flag and arm together reach lengths of up to 24.6 ft. Extensions of 3.3 ft are made entirely of antistatic hose, unlike the larger sizes which include rigid tubing.



Diameter (inches)	Length (feet)
Ø6.3	10 14
Ø8	10 14

Technical features



Evolution No Smoke ATEX

Diameter (inches)	Length (feet)
Ø6.3	7 10 14
Ø8	10 14

Technical features	Dust Evolution No Smoke ATEX	
	Pmax, bar	Kst, bar.m.s ⁻¹
PVC	6.7 - 8.5	27 - 98
Polyethylene	7.4 - 8.8	54 - 131
Epoxy resin	7.8 - 8.9	108 - 174
Lignite	8.1 - 10.0	93 - 176
Cellulose	8.0 - 9.8	56 - 229
Pigments	6.5 - 10.7	28 - 344
Aluminium	5.4 - 12.9	16 - 750
Flours	8.0 - 9.8	56 - 229
Carbon dust	6.5 - 10.7	28 - 250
Sugar	4.7 - 9	16 - 200

Kst values for some dusts of industrial interest

Technical features	Explosion class	
	Kst, bar.m.s ⁻¹	Type of explosion
St0	0 0	none
St1	< 200	weak
St2	>200-300	strong
St3	>300	very strong

Correlation between Kst values and the explosion class of a powder

General Components



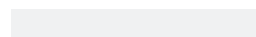
Rigid INOX AISI 316 tube



AISI 316 stainless steel extractor hood



Antistatic hose (with R<109 Ohm, -4°<T<194°F)



An ATEX version of the Evolution, constructed entirely from AISI 316 stainless steel, is available upon request.

All images and values on this catalogue are indicative and can be subject to modification and improvements. CORAL USA reserves the right to change them without previous



Coral USA

Coral USA provides innovative fume extraction and dust collection solutions for industrial applications. With decades of experience, Coral combines technical expertise, reliable performance, and a strong commitment to helping you maintain a safer, cleaner, and more productive workplace.

Based in Texas, we're ready to support your business with advanced solutions, responsive service, and ready-to-ship inventory.



CORAL USA CORP.
19121 Marketplace Avenue, Bldg. 1 Suite 165
KYLE, TX 78640,
USA

p.: +1 480 796 5352
e.: info@coralusa.com

coralusa.com



For a cleaner future.